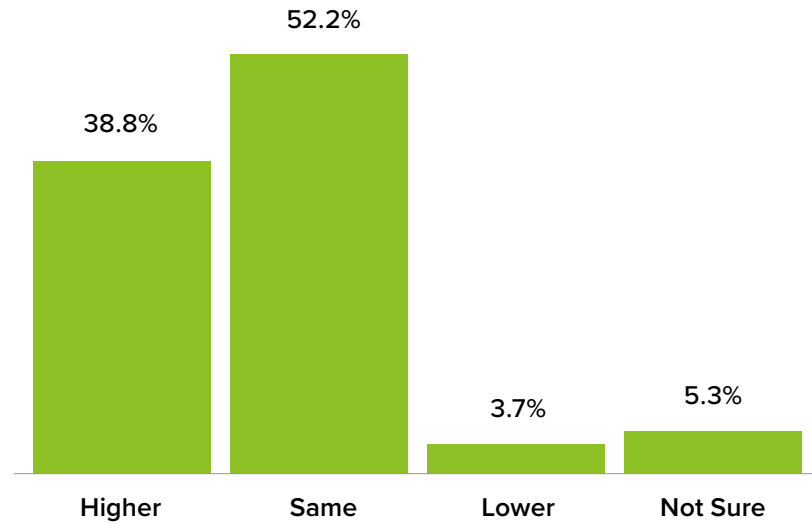




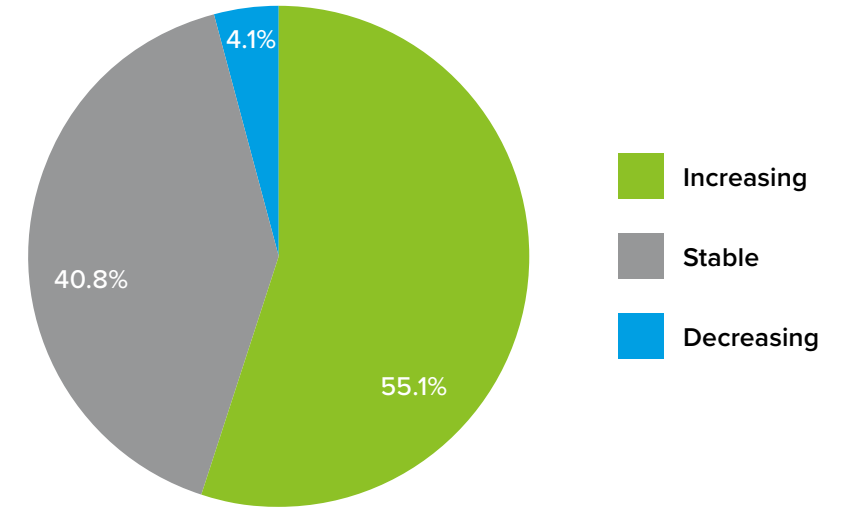
## BUDGET/REVENUE

How do you expect your in-plant's 2024 budget/revenue to compare with your 2023 budget/revenue?



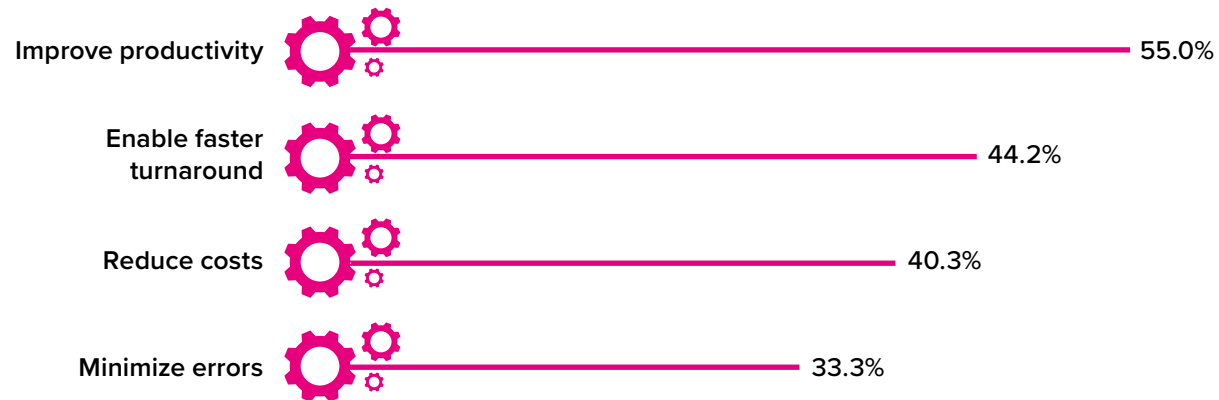
## WIDE-FORMAT VOLUME

Is your volume of wide-format printing increasing, stable, or decreasing?



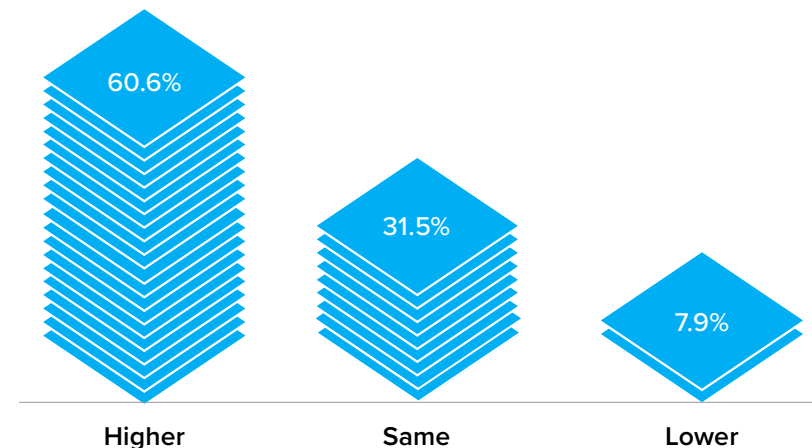
## AUTOMATION

Top reasons in-plants surveyed are automating equipment and workflow.



## PAGE VOLUME

How do you expect the volume of pages your in-plant will produce in 2024 to compare with year-earlier volume?



A2407085