



Xerox® Iridesse® Production Press w/ Xerox® EX-P 6 v4.0 Print Server Powered by Fiery®

Note: Certification is in accordance with Idealliance Digital Press Certification Program v2.3

The Idealliance Print Properties Digital Print Working Group has established a certification process for digital production presses (xerographic/inkjet). The following information is intended to assist printers and customers in understanding the printing conditions and how they were achieved and/or to replicate these results on a similar system.

I. Manufacturer

Xerox Corporation
201 Merritt 7
Norwalk, CT 06851-1056

II. Product Name

Manufacturer: Xerox
Print Engine Model: Xerox® Iridesse® Production Press
DFE: Xerox® EX-P 6 v4.0 Print Server Powered by Fiery®
Substrate: Billerud Sterling Premium Digital Gloss 100# Text (148gsm)

III. Overview

Xerox® Iridesse® Production Press

- Up to six inline print stations that print in a single pass, at rated speed, with spot on color-to-color registration
- Optional White, Clear, Silver, Gold, and gamut extension Fluorescent Pink Specialty Dry Inks for enhancements and brand color matching, plus Media Expansion Low Gloss Clear
- AI-guided Xerox® PredictPrint Media Manager Software baselines the press, expediting time to production
- Optimize performance with mixed-stock jobs supported by the Xerox® Mixed Media Acceleration Feature
- Additional high capacity feeders and inline finishing solutions, including robust configurations that accelerate XLS sheet productivity end-to-end
- Up to 120ppm
- Up to 475K pages/month
- Xerox® EX-P 6 v4.0 Print Server Powered by Fiery® with a RIP resolution of 1200x1200 dpi x10-bit

IV. System Components and Printing Procedure

System Components:

Print Engine Model: Xerox® Iridesse® Production Press (standard configuration)

DFE: Xerox® EX-P 6 v4.0 Print Server Powered by Fiery®

Substrate: Billerud Sterling Premium Digital Gloss 100# Text (148gsm)

Measurement Instrument: Full Width Array (FWA) in-line scan bar

Printing Procedure:

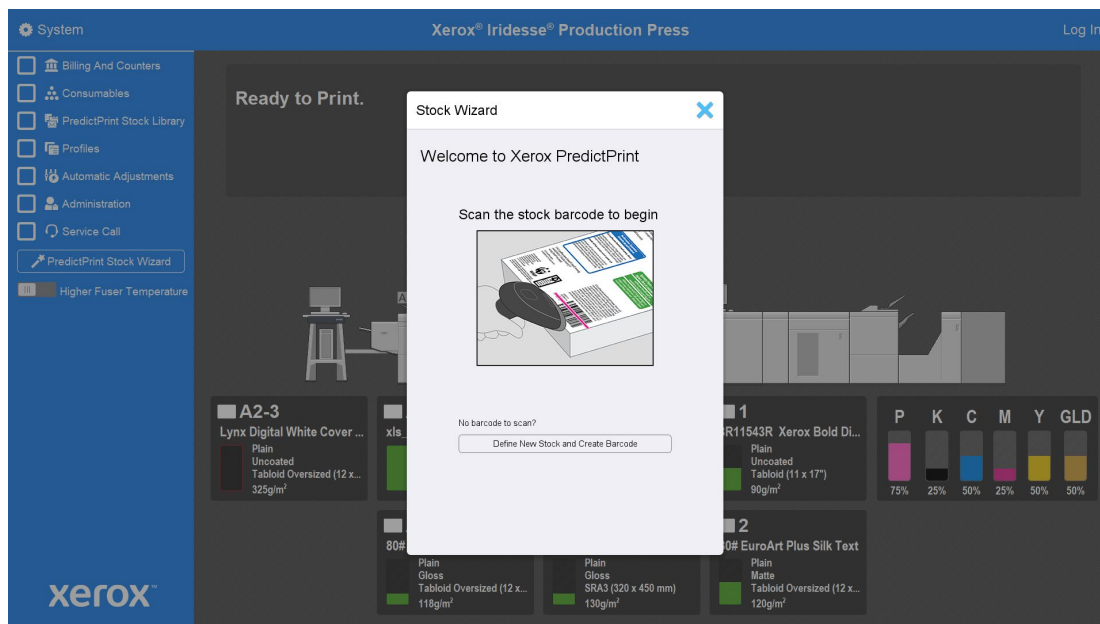
Media Setup

Load Media

- Load the media (Xerox Colotech+ Gloss 100# Text, 130gsm) into a High Capacity Feeder and wait for tray to rise.

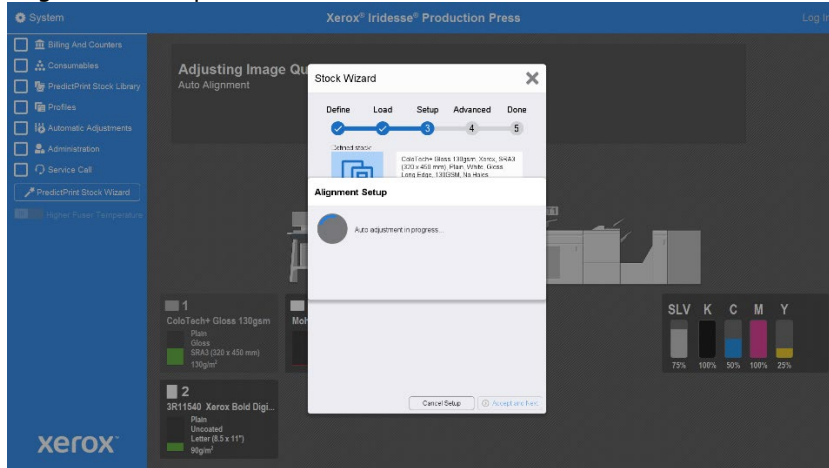
Configure Paper Settings

- Closing the tray after loading will bring up the Xerox PredictPrint Stock Wizard interface on the print engine PC monitor.
- Use the barcode reader to scan the barcode on the wrapper or manually define a new stock.

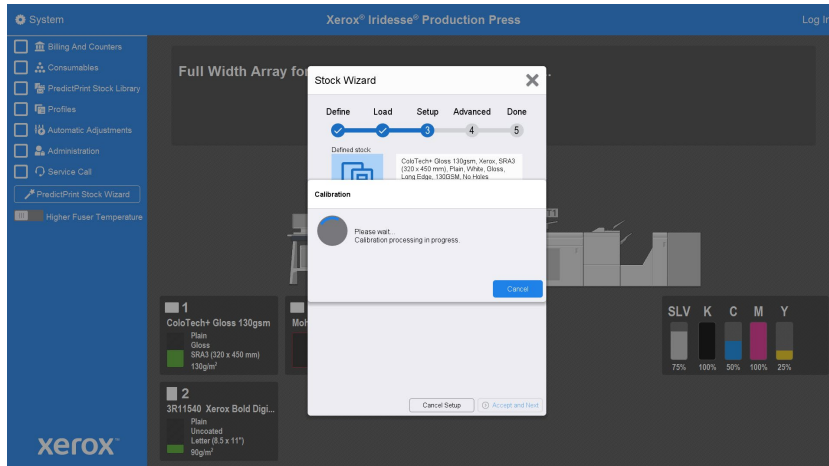


- After creating a new stock follow the setup procedures outlined in the Stock Wizard. These include:
 - Alignment Setup
 - Color Calibration

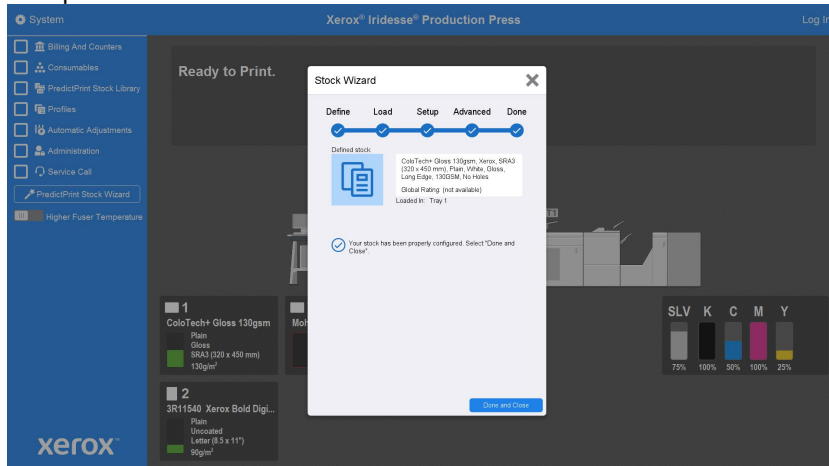
Alignment Setup



Color Calibration



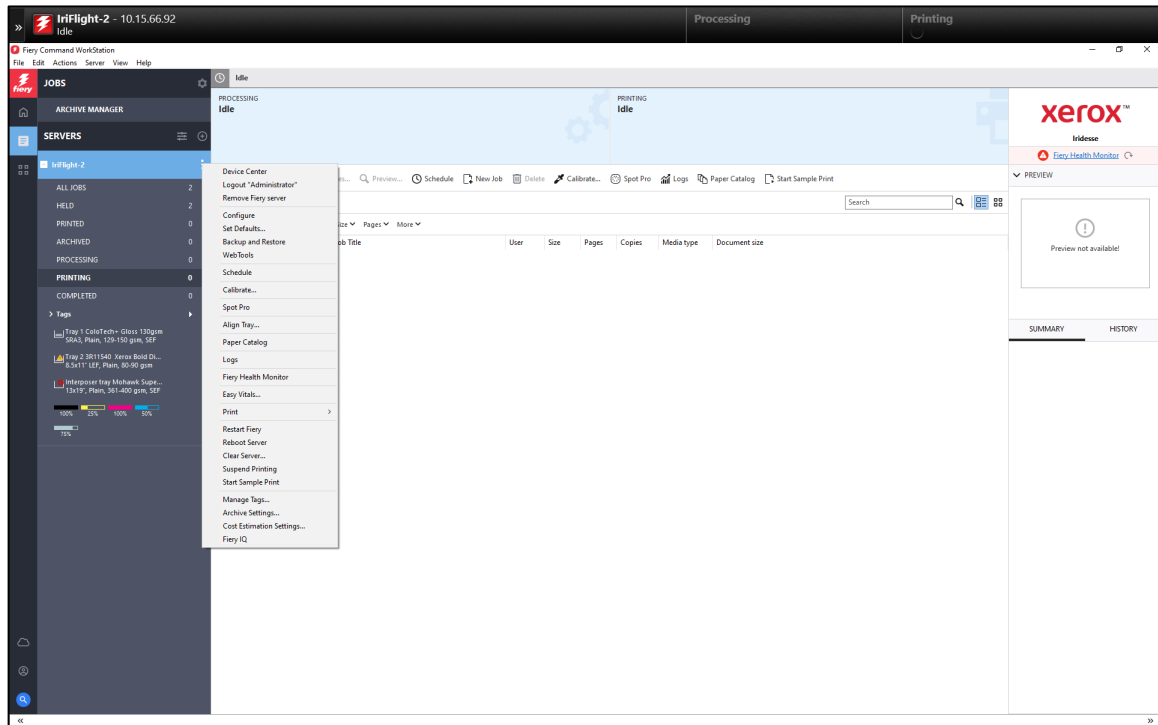
Completion Screen



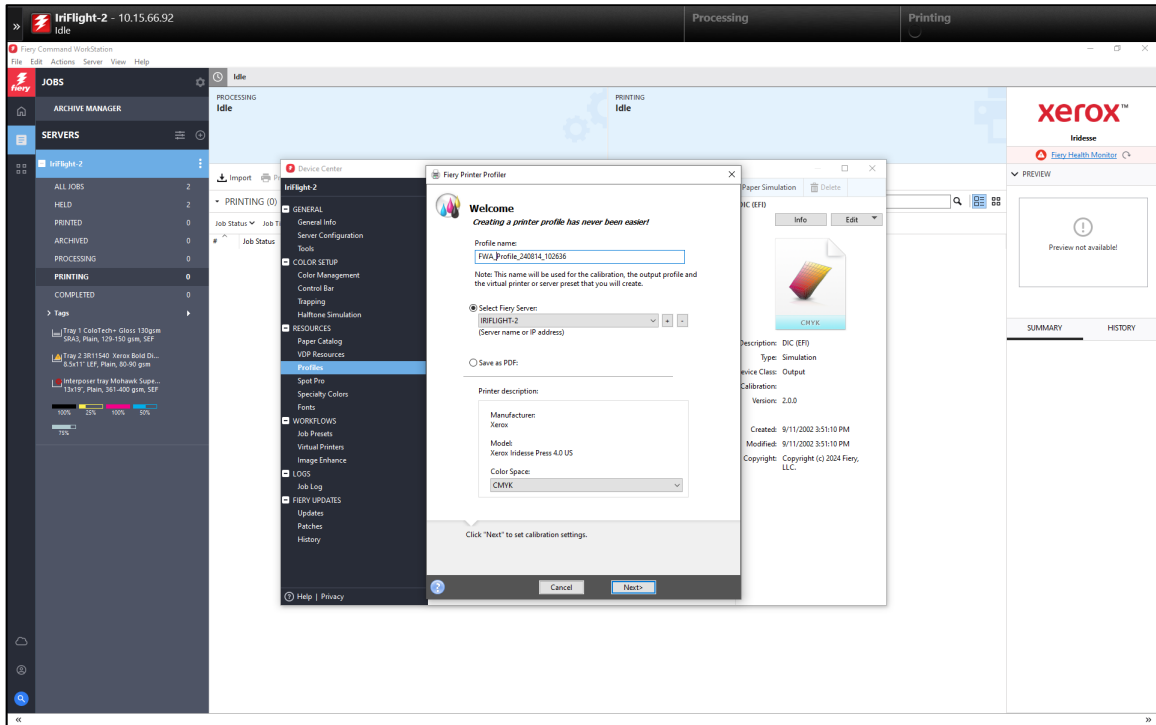
Full Width Array (FWA) Output Profile Creation

Fiery Command WorkStation

- Under SERVERS, select Device Center from your server's menu (three vertical dots icon)

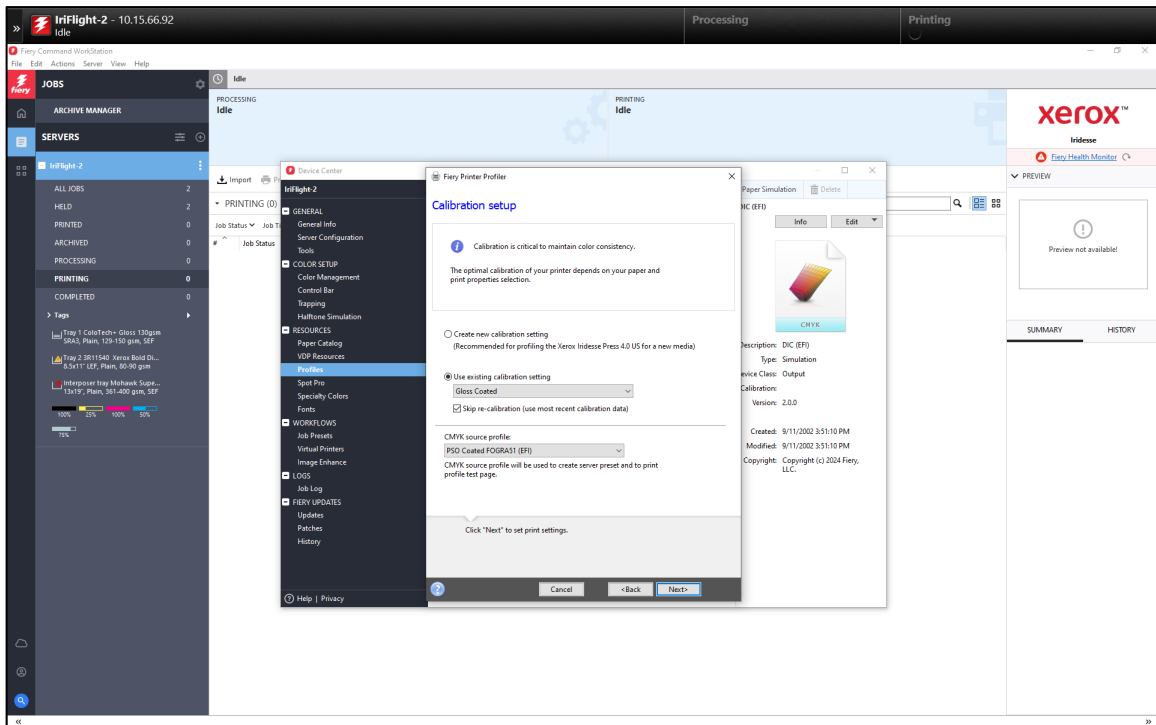


- From Device Center select Profiles: New: Output Profile (this opens the Fiery Printer Profile Menu)
 - **Welcome UI**
 - Name your profile
 - Select your Fiery server
 - Click Next



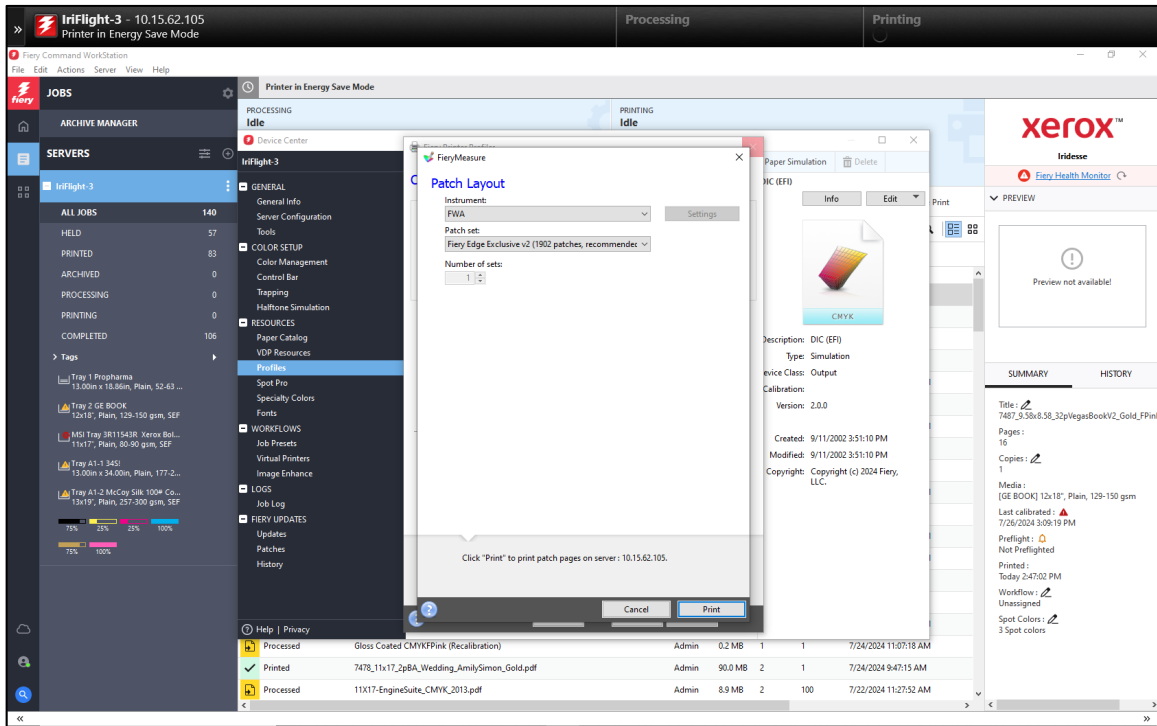
○ Calibration setup UI

- Select Use existing calibration setting and select the calibration created using the PredictPrint Stock Wizard
- Depending on the age of that calibration, either check or uncheck the Skip re-calibration box
- Assuming you just completed the PredictPrint Stock Wizard calibration, check the Skip re-calibration box.
- Select PSO Coated FOGRA 51 (EFI) from the CMYK Source Profile pull-down.
- Click next



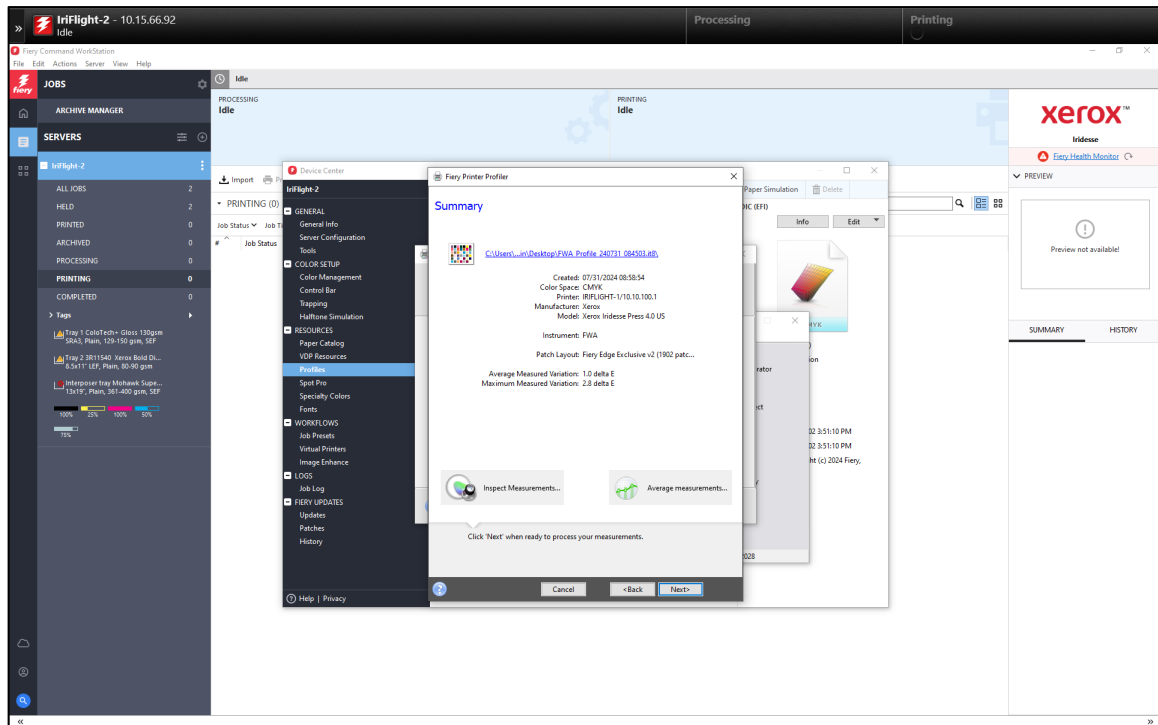
○ **Patch Layout UI**

- Select FWA from the instrument pull-down
- Select Fiery Edge Exclusivev2 from the Patch set pull-down
- Select Next



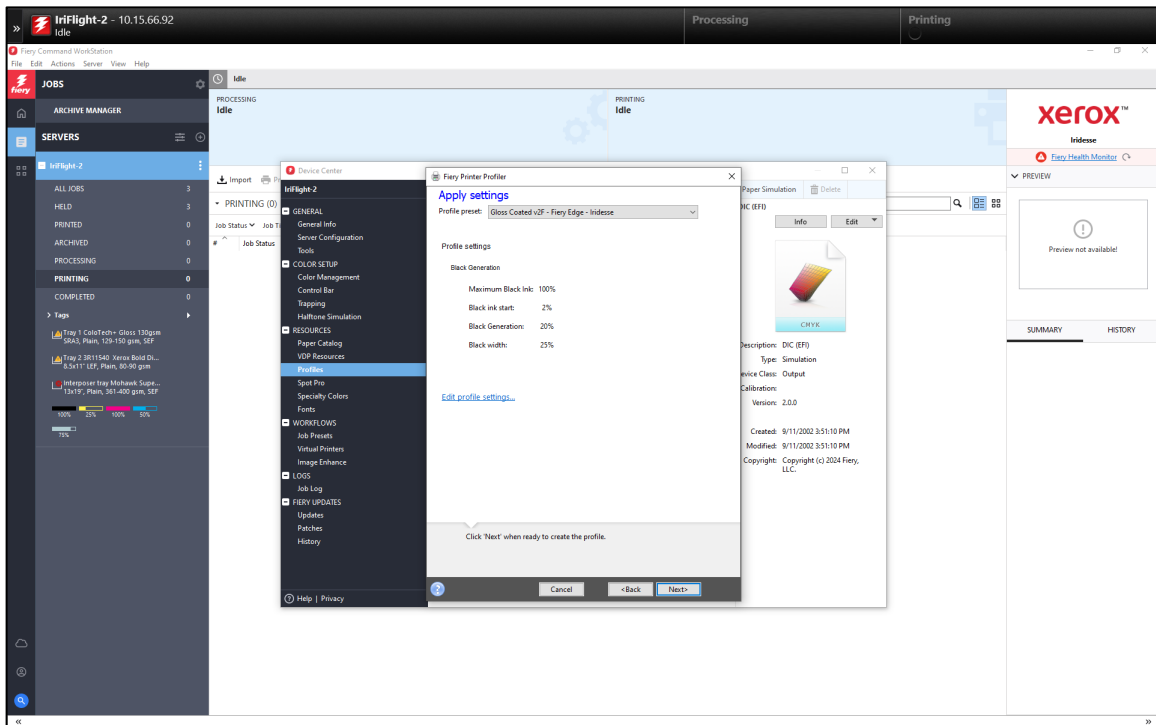
- **Summary UI**

- Appears after successful measurements
- Assess variation and address any issues causing excessively high dE results
- Select Next



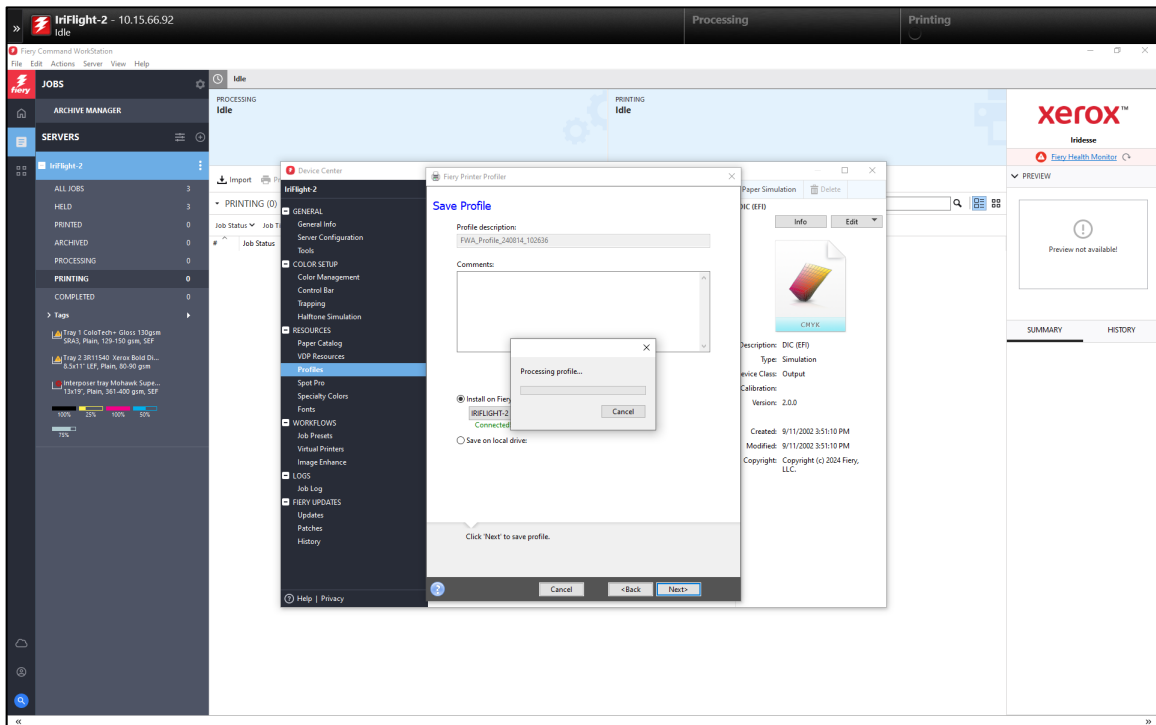
- **Apply Settings UI**

- Select the default Gloss Coated profile from the Profile preset pull-down.
- Click Next

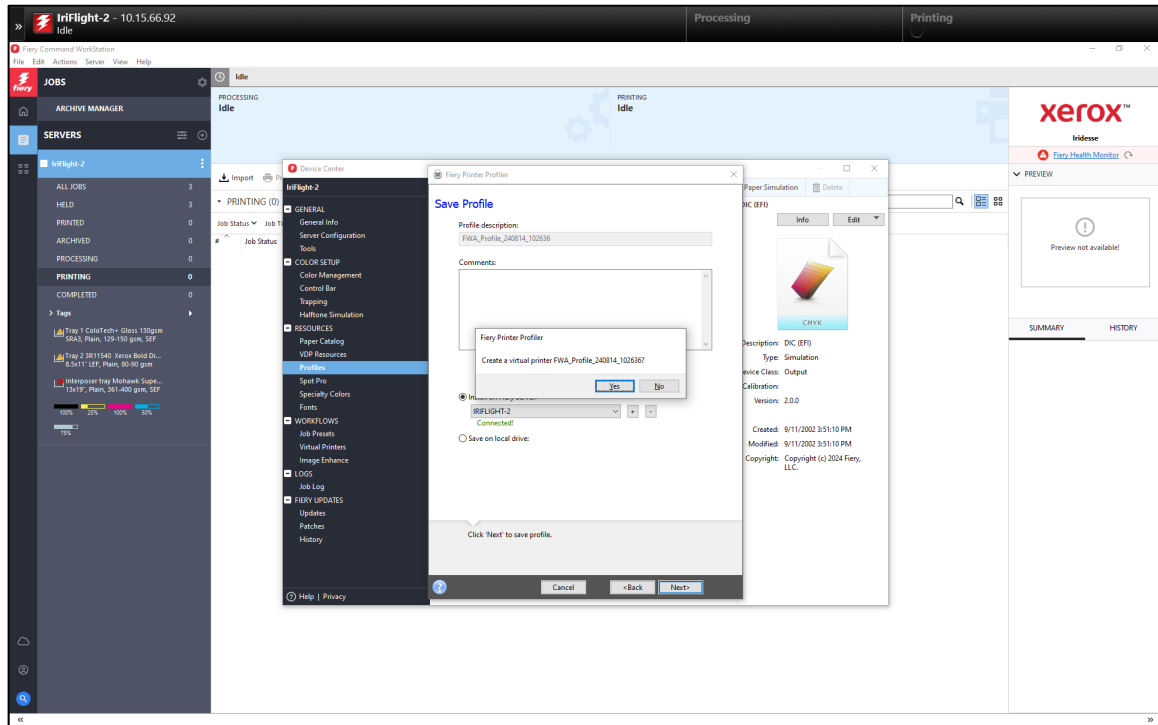


- **Save Profile UI**

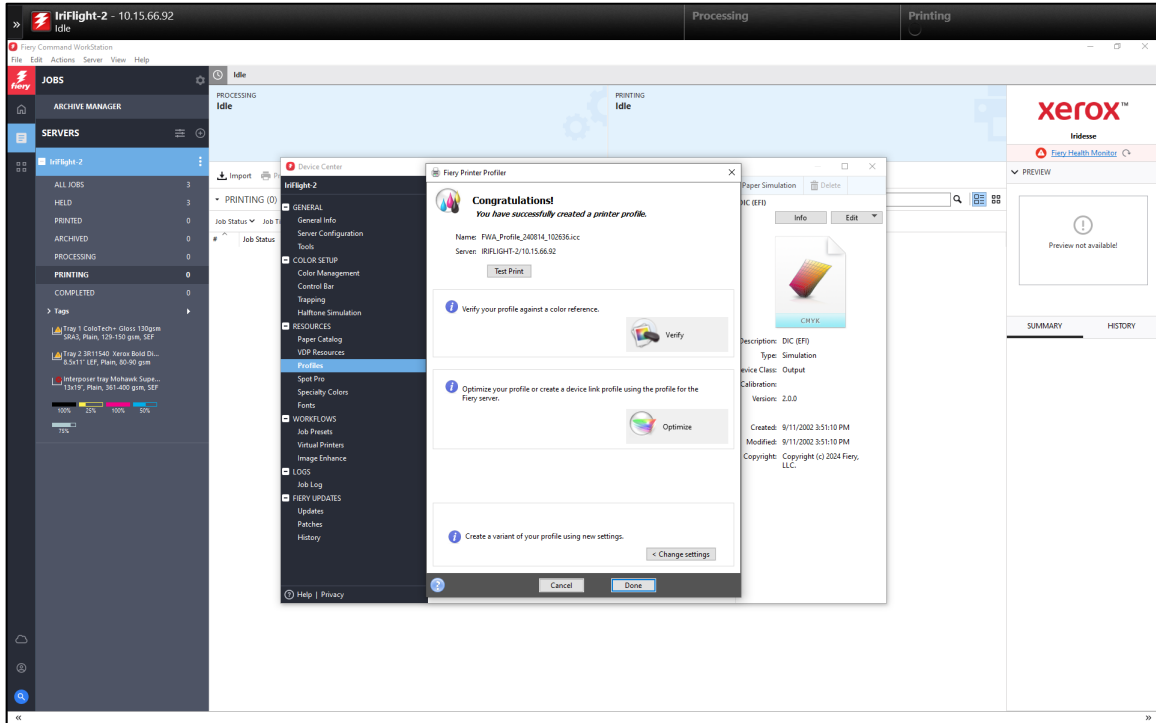
- ensure your server is selected from the pull-down and then
- Click Next to create and save the profile



- When the Create a virtual printer window appears, select no.

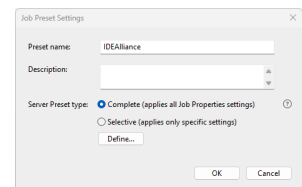


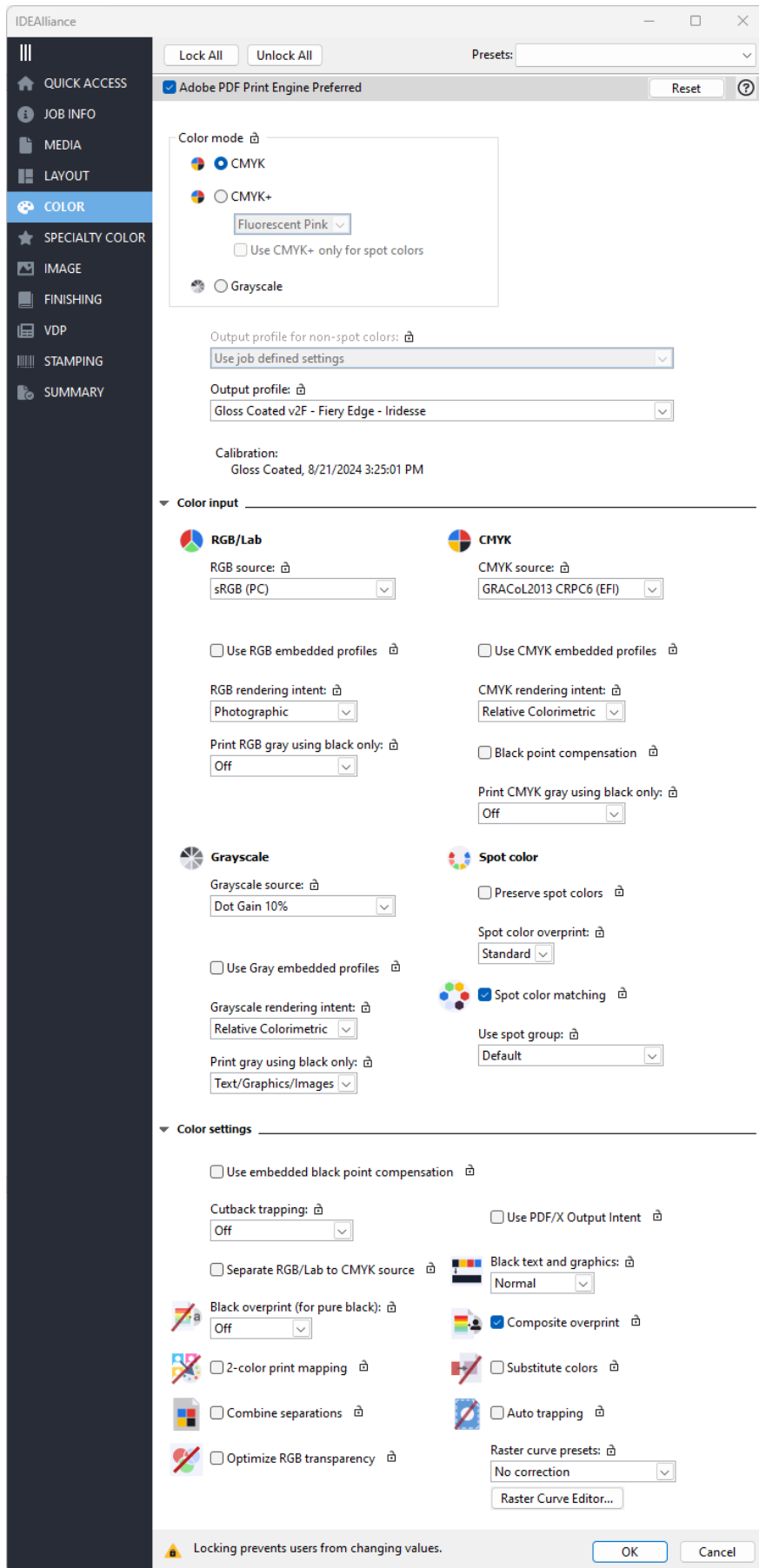
- When the Congratulations window appears, select Done



Setting Job Properties / Creating Job Preset* **Creating Job Presets**

- Command Workstation: Device Center: Workflows: Job Presets: New...
 - Create a new Presets
 - Select Job Properties: Define
- Change the setting in the Color tab as follows:
 - Output Profile: *select profile created in previous step*
 - CMYK source: *GRACoL2013 CRPC6 (EFI)*
 - CMYK Rendering Intent: *Relative Colorimetric**
**If paper white point differs from GRACoL2013, use Absolute Colorimetric*
 - Black point compensation: *Unchecked*
 - Print CMYK gray using black only: *Off***
***For CMYK grays to be rendered with black only, turn On (at the expense of accuracy)*
 - Black Text and Graphics: *Normal****
****For pure black text and graphics, set to Pure Black On (at the expense of accuracy)*
 - All other Color and Image settings at default





V. Finishing Procedures (Optional)

No finishing procedures applied

VI. Additional Data (Optional)

No additional data required