



## G7 System Certification Application Data Sheet

# KOENIG & BAUER

The IDEAlliance Print Properties Working Group has established a certification process for G7 Systems. In accordance with this process The G7 System Certification Program is designed to evaluate the ability of a candidate system to calibrate a printing device to meet the G7 greyscale definition using four 1-D Curves within the tolerances outlined in this document. All evaluations are based on the parameters of the G7 Specification (draft 2008). The following information is intended to assist producers and consumers in the use of the vendor system as specified for creating the four 1-D Curves.

### Manufacturer

Koenig & Bauer AG  
Friedrich-List-Straße 47  
01445 Radebeul  
Germany  
Tel: +49 351 8330  
Web: [www.koenig-bauer.com](http://www.koenig-bauer.com)



### Product

**"QualityPass 8"**

## Testing Instructions (procedures)

### Print the test forme(s)

Add the P2P51 chart (or multiple copies in different parts of the sheet if you prefer) to a test forme, along with an appropriate process control colour bar, and print without any adjustment curves.

### Measure the sheet(s)

Create a new Job with the correct parameters:

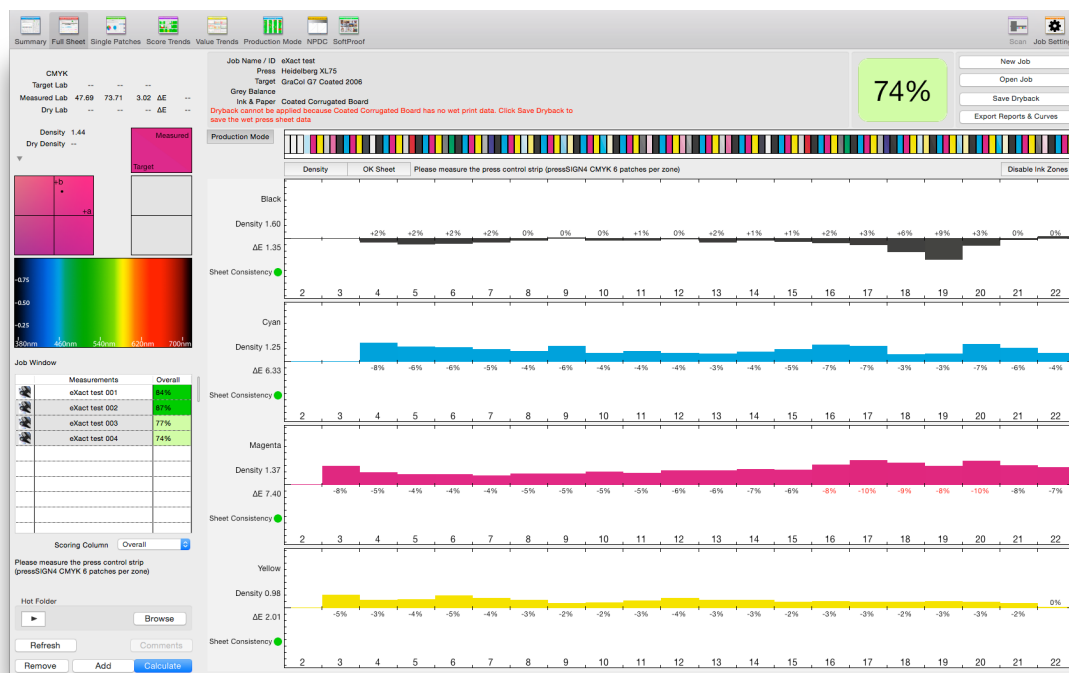
The screenshot shows the 'New Job' dialog box in the QualityPass PRO software. The dialog is titled 'New Job' and contains various configuration options for a new printing job. The 'Site' is set to 'HQ'. The 'Job Name / ID' is 'G7 test'. The 'Template' is 'None'. The 'Standard' is 'CRPC6 Premium Coated Large Gamut'. There is a checkbox for 'Target CMYK Lab values adjusted relative to paper' which is currently unchecked. The 'Ink & Paper' section shows 'Generic Coated' for the ink and '7 Colour' for the press. Below this, there are icons for the color bars: 1 (K), 2 (C), 3 (M), 4 (Y), 5 (S1), 6 (S2), and 7 (S3). The 'Colour Bar' is set to '4c (CMYK) 6 patches per zone'. There is a 'Press Sheet' section with 'Dry' and 'Wet' options, where 'Wet' is selected. The 'Client' is 'Default Client', 'User' is 'mac', 'Category' is 'None', and 'Subcategory' is empty. There is a 'SoftProof' button labeled 'Browse'. The 'Client Reference' section has 'Full Sheet' set to '747.50 mm' and 'Runlength' set to an empty field. At the bottom, there is a 'Comments' text area. The dialog has 'Cancel', 'Send', and 'Create' buttons at the bottom.

The standard chosen reflects the desired solid and overprint colour targets and how the print is to be scored. If you have not already done so, please refer to **Chapter 8 - Adding Press Targets** starting on page 29 of the QualityPass Manual, for details of how to setup a GraCol G7 standard.

Where applicable, such as on a lithographic printing press, measure the process control colour bar first and adjust the solid inks so that they are within the  $\Delta E$  tolerance across the sheet. The Full Sheet window in QualityPass PRO (screenshot below) shows whether to add or subtract ink to each colour for each measured ink key.

QualityPass 8 supports all of the currently available handheld and auto-scanning spectrophotometers, along with a number of discontinued models, for direct measurement. Details of how to configure and use them can be found in **Chapter 13 - Measurement Devices** starting on

page 67 of the QualityPass manual. The software can also import a number of measurement files exported from various on-press closed loop systems or other applications. Please refer to **Chapter 15 - File Based Measurement**, starting on page 114 of the QualityPass manual, for further details.



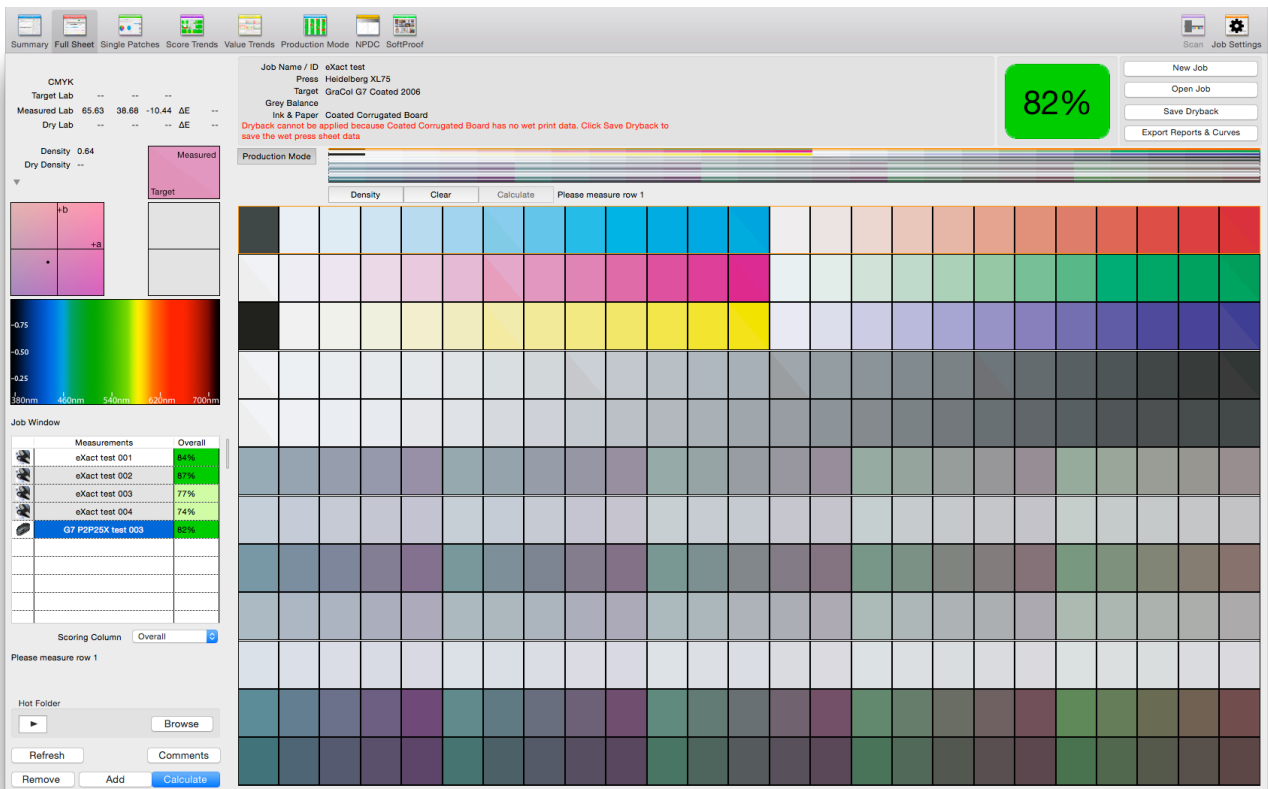
For offset printing processes it is recommended that, once the process inks are an acceptable  $\Delta E$ , the RGB overprints also be checked for Trapping % and  $\Delta E$ . If they are out of tolerance then adjustments to press settings or consumables may be required, which can affect the plate compensation required to achieve the neutral print density curve.

Once you are satisfied the press is printing the solids and overprints correctly, update the job with the P2P51 colour bar (as shown in the Job Settings window below) if you are measuring the chart with one of the supported Spectrophotometers.

The screenshot shows the Job Settings window with the following configuration:

- Site:** HQ
- User:** fred
- Target Standard:** CRPC6 Premium Coated Large Gamut
- Ink & Paper:** Generic Coated
- Client:** Default Client
- Press:** 7 Colour
- Colour Bar:** P2P51\_vt4
- Full Sheet:** 1020.00 mm
- Runlength:** 0
- Category:** None
- Subcategory:**

If you have not already done so, please refer to **Chapter 11 - QualityPass Colour Bars** starting on page 54 of the QualityPass Manual, for further instructions of how to add the P2P51 chart definition.



Start with line 1 and measure sequentially. The software automatically selects the next line after each scan. The "active" line to be measured is highlighted with an orange border.

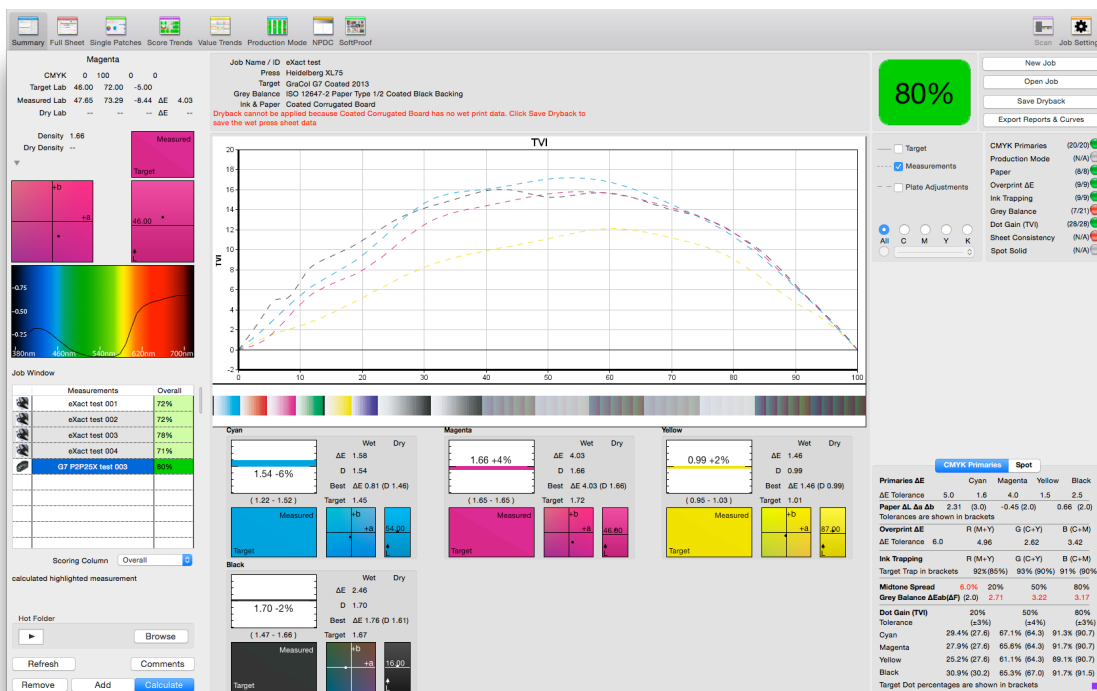
Each patch shows a diagonal split. The lower left half is the target colour and the upper right the measured value. Lines with measurement errors, i.e. noticeably different colours between top and bottom, can be scanned again by simply clicking on the line and rescanning. The software will return the active line to the next that has not already been scanned.

Once you have finished measuring the chart click the 'Calculate' button.

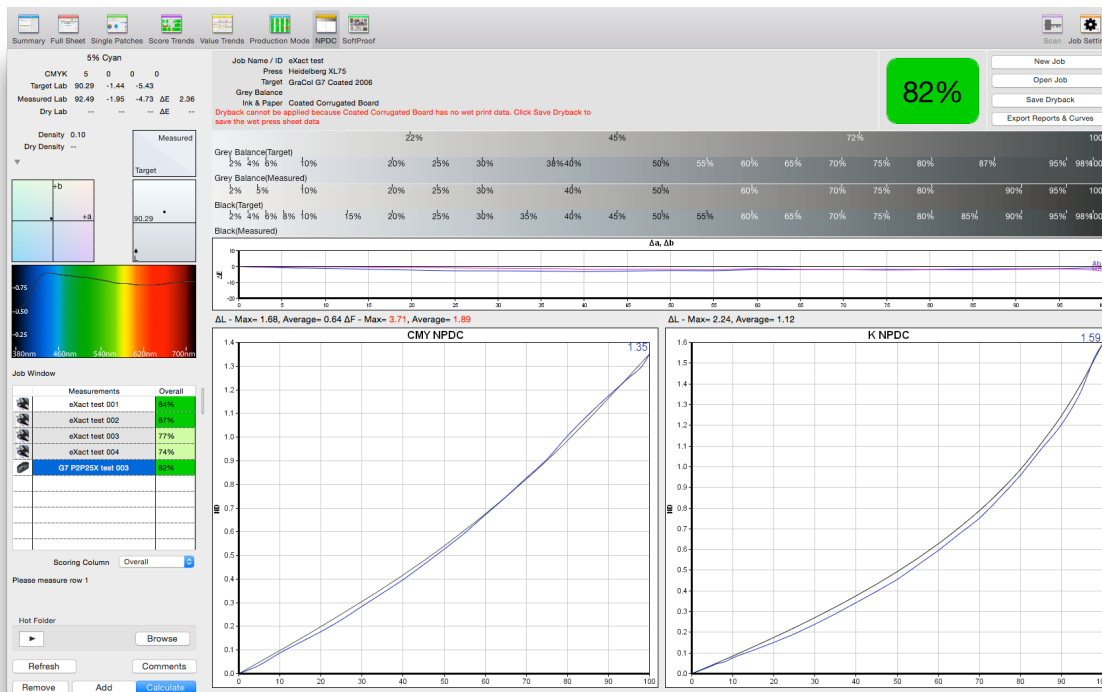
Once the "Calculate" button has been pressed, the software will score all the data against the targets in the chosen Press Standard. An overall percentage will be shown with a colour coded background.

## Assessing the Sheet

The “Summary” screen in QualityPass shows all of the measured data compared to the chosen target with  $\Delta E$  and TVI values etc, along with a traffic light based scoring system.



The NPDC Panel contains three elements.



Along the top a target and measured tint ramp, for both grey balance and single black, allow a visual assessment of the colour change from 0% to 100%.

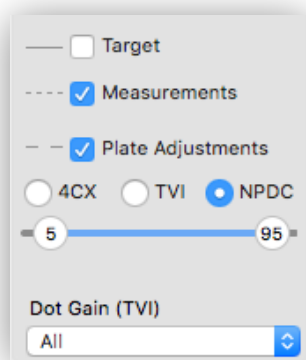
The middle section shows the variation of  $\Delta a$  and  $\Delta b$  for the grey balance patches measured from 0% to 100%, along with the average and maximum  $\Delta L$  and  $\Delta F$  for CMY, and  $\Delta L$  for Black.  $\Delta L$  and  $\Delta F$  values out of tolerance are shown in red.

The lower section shows the measured (blue) and target (black) NPDC for CMY and K in separate panels.

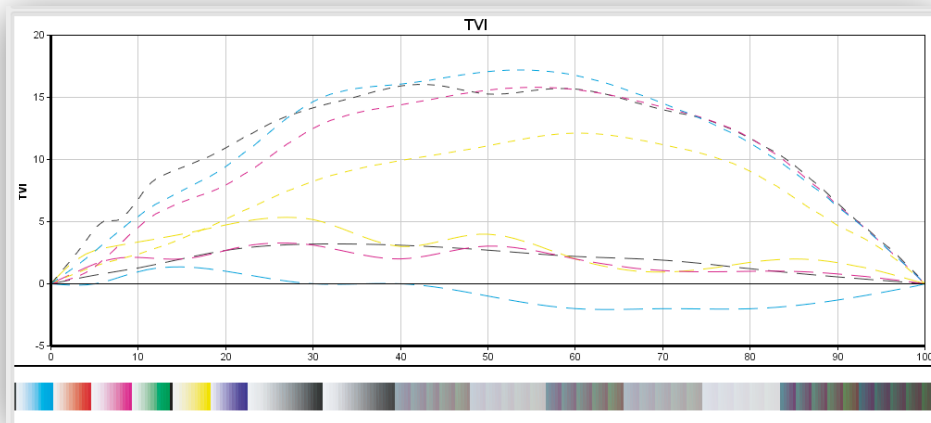
QualityPass will calculate how to adjust the NPDC to achieve the desired results.

## Adjusting Parameters

Any plate correction curves can be previewed by ticking the "Plate Adjustments" box in the Summary screen, as shown below.



After a short calculation process (shown in the software by a progress bar) the plate correction curves will be shown in the TVI graph, as shown below;



After evaluating the printed sheet for consistency, click on 'Export Reports & Curves'





Save / Export Data

Job Name / ID:

Export Tint Data

Text File Format:

Select which data to Export

Colour		Export
Black		<input checked="" type="checkbox"/>
Cyan		<input checked="" type="checkbox"/>
Magenta		<input checked="" type="checkbox"/>
Yellow		<input checked="" type="checkbox"/>

Only colours with measured solid and tints can be exported

Calibration Curves:  Export:

☐ 4CX
 ☒ NPDC
 ☐ TVI

Calculate the Grey Balance target according to a Neutral Print Density Curve (NPDC)

Save PDF Job Report

Measurement Report:  Save PDF Report:

email PDF Report:

Print Job Labels

Scoring:  Print Label:

Click on 'NPDC' for the calculation of G7 compatible curves.

## Applying parameters to the printing system

The simplest way of applying the plate correction curves is by exporting a file of the curve data and then importing into one of the supported workflows, as shown on the right.


Depending on the workflow, there are several choices for export, as shown below;

Measured (Actual) Press Tint Data  
 Target (Intended) Press Tint Data  
 ✓ Adjustment (Calibrated) Tint Data  
 Harlequin v9 Postscript

Adobe Curve File  
 Agfa ApogeeX  
 Caldera  
 DeviceLink Profile  
 EFI Colorproof XF  
 ElecRoc  
 Esko  
 Flowdrive  
 Fuji XMF  
 ✓ Harlequin RIP  
 Harmony Curves  
 Heidelberg Prinect  
 HP Indigo  
 inkWIZE AutoCurves  
 Nexus RIP  
 Onyx  
 OpenRIP  
 Rampage  
 Tab Delimited Text File  
 Trueflow

Please refer to **Chapter 25 - Entering Plate Correction Curves**, starting on page 196 of the QualityPass Manual (PDF can be accessed from the Help menu in the software) for further details of how to import the curve files into your workflow.

If your workflow does not support the import of a plate correction curve, you can generate a PDF Measurement Report including the measured tints, target tints and plate adjustments, as shown below;

Plate Adjustment Tint Data					
	Dot	K	C	M	Y
	0%	0.0%	0.0%	0.0%	0.0%
	2%	0.6%	0.5%	1.5%	1.4%
	5%	1.4%	1.0%	2.3%	2.7%
	10%	1.8%	1.0%	1.7%	3.4%
	20%	3.1%	1.0%	3.5%	4.7%
	25%	3.3%	0.5%	4.1%	5.3%
	30%	3.2%	0.0%	3.2%	5.2%
	40%	2.9%	-0.0%	2.0%	3.0%
	50%	2.6%	-1.0%	3.0%	4.1%
	60%	2.0%	-2.0%	2.0%	3.0%
	70%	1.8%	-2.0%	1.3%	1.2%
	75%	1.3%	-1.9%	0.3%	0.9%
	80%	0.9%	-2.0%	-0.6%	1.2%
	90%	1.2%	-2.0%	2.4%	3.0%
	95%	0.5%	-1.0%	2.6%	2.3%
	100%	0.0%	0.0%	0.0%	0.0%

The G7 badge, shown in the screenshot above, is only included in the Measurement Report PDF when the NPDC curve option has been selected.

### **Saving the “QualityPass” session**

All jobs and measurements are automatically saved into a multi-user SQL database.



## Analyzing Results

QualityPass automatically scores any print to the chosen press standard. Additionally, the Measurement Report PDF shows the average and maximum figures of  $\Delta F$  and  $\Delta L$  values for the CMY greys and K.

### KOENIG & BAUER

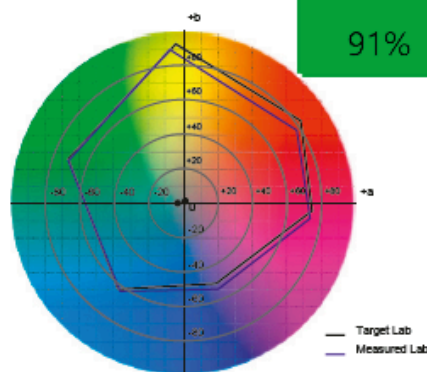
## QualityPass Certification

### Measurement Report

Job name : G7 P2P51 test  
Printed by : Koenig & Bauer AG (HQ)  
Press : 6c B2  
Ink & paper : pressconsum(Dry press sheet)  
Device : QualityPass v8.3.0 lab  
Date / Time : 20th July 2012 10:12:13  
Client : Generic Client  
Measurements : 1 measurement  
Press Standard : CRPC6 Premium Coated LG  
Grey Balance : CRPC6 Premium Coated Large Gamut

	Score	Grade
CMYK Primaries	(18/20)	●
Overprint Lab	(9/9)	●
Grey Balance	(8/15)	●
CMY NPDC $\Delta C_h$	(10/10)	●
CMY NPDC $\Delta L$	(10.00/10.00)	●
K NPDC $\Delta L$	(10/10)	●

● 80%  
● 70%  
● 60%  
● Fail



Lab - D50, 2° Observer. Density measured Status T

Color	Measured Lab	Target Lab	68th Percentile	$\Delta E$ (Tolerance $\Delta E_{2000}$ )	CMYK Density (Estimated)
Cyan	54.19 -36.28 -50.45	56.00 -37.00 -50.00	1.75	1.75 (3.00)	1.45 (1.40)
Magenta	47.79 73.34 -8.44	48.00 75.00 -4.00	1.83	1.83 (3.00)	1.59 (1.62)
Yellow	88.08 -8.81 89.08	89.00 -4.00 93.00	1.87	1.87 (3.00)	0.93 (1.00)
Black	16.97 -2.33 -0.62	16.00 0.00 0.00	3.35	3.35 (3.00)	43% 1.58 (1.62)
Red(M+Y) Overprint	46.63 66.32 42.38	47.00 68.00 48.00	2.19	2.19 (3.00)	92% (N/A)
Green(C+Y) Overprint	49.53 -66.36 24.62	50.00 -66.00 26.00	0.76	0.76 (3.00)	93% (N/A)
Blue(C+M) Overprint	23.70 20.92 -49.36	25.00 20.00 -46.00	1.59	1.59 (3.00)	91% (N/A)
Paper	94.43 -0.48 -2.58	95.00 1.00 -4.00	2.47	2.47 (3.00)	
Highlight Grey Balance	76.72 -1.33 -4.72	75.04 -0.35 -2.11	2.79	2.79 (2.00 G7)	
Midtone Grey Balance	57.71 -2.07 -4.03	57.03 -0.26 -1.56	3.07	3.07 (2.00 G7)	
Shadow Grey Balance	39.06 -2.49 -2.73	39.20 -0.15 -0.90	2.97	2.97 (2.00 G7)	

